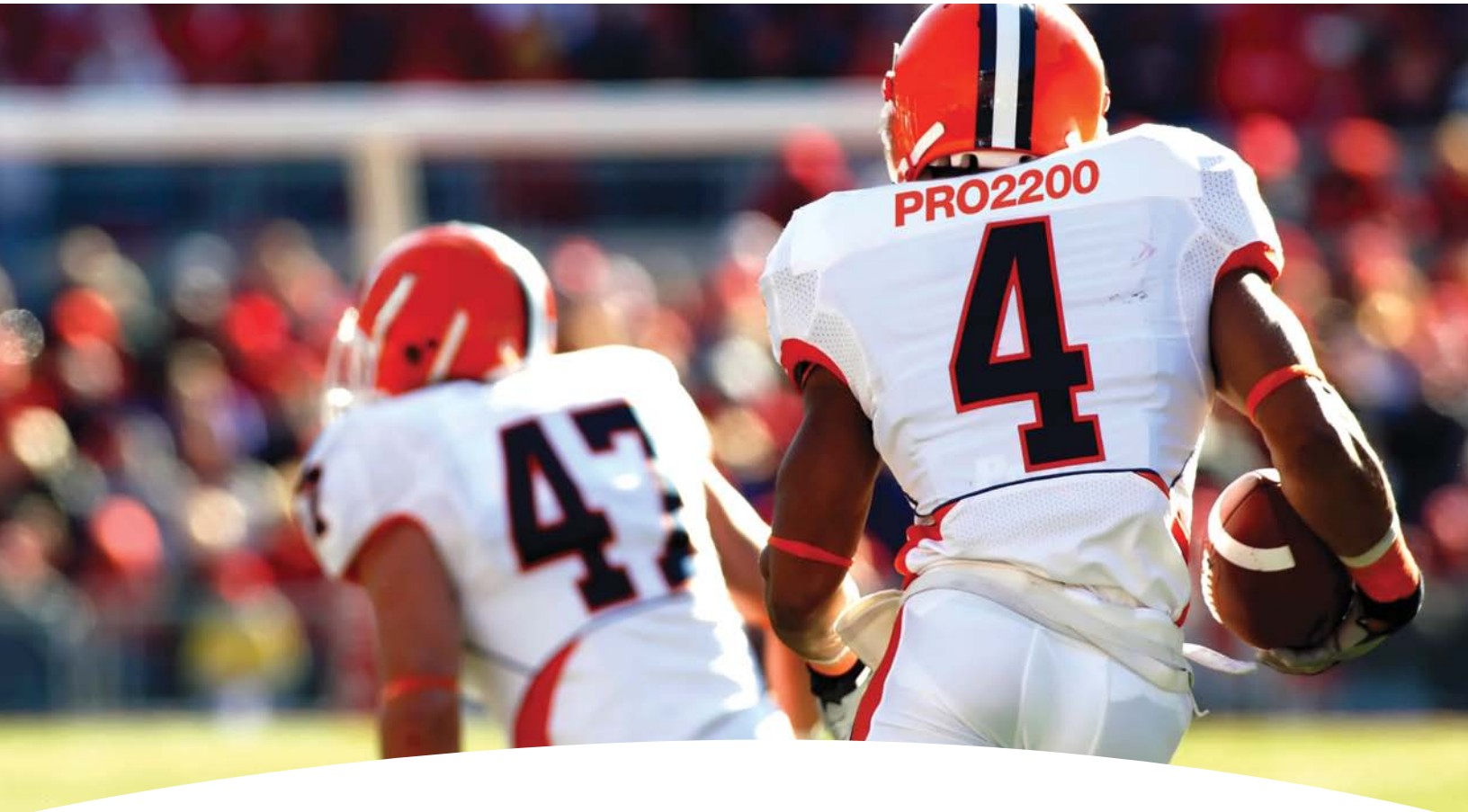


# impact player



## When the game is on the line, go with a PRO.

You shouldn't have to worry about whether the access control panel you install is going to withstand the test of time. And neither should your customers. Rely on Honeywell's PRO2200 access control panel for longstanding performance. Its compact, modular design lets you custom-fit the installation while making the best use of valuable mounting space. And because it's powered by our WIN-PAK® software,

you'll get the scalability and flexibility you need to provide a fully integrated security system. Start with two doors—and work your way up to 16 doors in a single enclosure. Now that's the performance of an impact player.

Order your PRO2200 today and get the win!

## Honeywell

For more information, please call 1-800-323-4576 or visit [www.honeywellaccess.com](http://www.honeywellaccess.com)

© 2010 Honeywell International Inc. All rights reserved.